

Green House Gas Emissions 2014 VAUDE Obereisenbach (Headquater)

year	2013							2014									
	SCOPE 1		SCOPE 2		SCOPE 3		Change of consumption in %	Change of emissions in %	SCOPE 1		SCOPE 2		SCOPE 3		Data source	Change of consumption in %	Change of emissions in %
	unit	value							unit	value							
general company data																	
number of employees	[Personen]	474							[Personen]	509						7,4%	
number of workdays per year (per full time position)	[Arbeitstage]	220					0,0%	-	[Arbeitstage]	220						0,0%	-
company area	[m2]	18.897					0,5%	-	[m2]	18.897						0,0%	-
energy																	
	unit	value	GHG						unit	value	GHG						
		[kWh]	[t CO2e]							[kWh]	[t CO2e]						
renewable power (label see comment) Vaude-Str. 2	[kWh]	512.526	7,53	0,00	0,00	7,53	-10,1%	-10,1%	[kWh]	589.130	8,66	0,00	0,00	8,66	ecoinvent 2.2 electricity, low voltage, certified electricity, at grid	14,9%	14,9%
renewable power (label see comment) Siggenweilerstr. 25	[kWh]	61.980	0,91	0,00	0,00	0,91	#DIV/0!	#DIV/0!	[kWh]	63.156	0,93	0,00	0,00	0,93	ecoinvent 2.2, electricity, low voltage, certified electricity, at grid	1,9%	1,9%
natural gas Vaude Str. 2	[kWh]	1.095.118	275,97	221,21	0,00	54,76	20,5%	20,5%	[kWh]	837.403	36,90	29,58	0,00	7,32	ecoinvent 2.2, natural gas, burned in industrial furnace	-23,5%	-86,6%
natural gas Siggenweilerstr. 25	[kWh]	55.035	13,87	11,12	0,00	2,75	#DIV/0!	#DIV/0!	[kWh]	71.889	3,17	2,54	0,00	0,63	ecoinvent 2.2, natural gas, burned in industrial furnace	30,6%	-77,2%
total		1.724.659	298,28	232,33	0,00	65,95	16,7%	25,7%		1.561.578	49,66	32,12	0,00	17,54		-9,5%	-83,4%
water																	
water consumption Vaude Str. 2	[m3]	1.919	0,61			0,61	-12,5%	-12,5%	[m3]	1.972	0,63			0,63	ecoinvent 2.2, tap water, at user RER	2,8%	2,8%
water consumption Siggenweilerstr. 25	[m3]	365	0,12			0,12	#DIV/0!	#DIV/0!	[m3]	440	0,14			0,14	ecoinvent 2.2, tap water, at user RER	20,5%	20,5%
total		2.284	0,73			0,73	+4,1%	+4,1%		2.412	0,77			0,77		+5,6%	+5,6%
Geschäftsreisen und Pendelverkehr firmeneigene Fahrzeuge																	
	distance	fuel consumption	GHG						distance	fuel consumption	GHG						
	[km]	[L petrol/diesel resp. kg gas resp. kWh]	[t CO2e]						[km]	[L petrol/diesel resp. kg gas resp. kWh]	[t CO2e]						
business trips and commuting				3,2	0,0	1,7									ecoinvent 2.2: transport, passenger car, petrol, fleet average, RER, [pkm]; without emissions from fuel		
Bus (Shuttle)	-	-	-				-	-	-	-	-					-	-

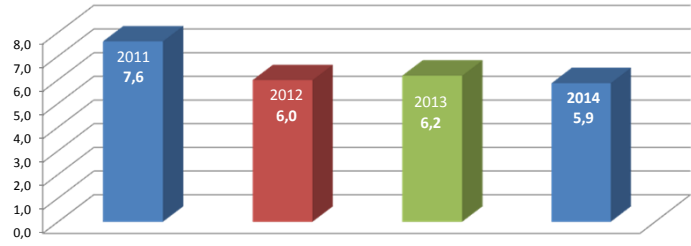
cars, petrol	27.000,0	3.966,0	4,9	3,2		1,7	-1,9%	-67,2%	95.219	6.304	7,7	5,1		2,6	ecoinvent 2.2: transport, passenger car, petrol, fleet average, RER, [pkm]; without emissions from fuel	59,0%	59,0%
cars, diesel	2.341.262,0	166.988,7	659,3	445,9		213,4	-0,2%	2,8%	2.447.762	166.318	656,6	444,1		212,6	ecoinvent 2.2: transport, passenger car, diesel, fleet average 2010, RER, [pkm]; without emissions from fuel	-0,402%	-0,402%
cars, gas (LPG)	nan	1.452,0	12,4	6,5		5,9	57,1%	210,2%		1.320	11,3	5,9		5,3	IPCC 2006 + ecoinvent 2.2: transport, passenger car, natural gas	-9,1%	-9,1%
total	2.368.262,0	172.406,7	676,5	455,6	0,0	220,9	0,0%	2,4%	2.542.981,0	173.942,0	675,6	455,1	0,0	220,5		0,9%	-0,1%
	distance [km]		GHG [t CO2e]						distance [km]		GHG [t CO2e]						
Pendeln und Geschäftsverkehr mit anderen Fahrzeugen																	
commuting	[km]		[t CO2e]						[km]		[t CO2e]						
foot / bike	46.849	-	0,45			0,45	-	2,5%	54.990	-	0,53			0,53	ecoinvent 2.2 Transport, Fahrrad	+17,4%	17,4%
bus	13.694	-	1,43			1,42951666	-	-	4.779	-	0,50			0,50	ecoinvent 2.2, transport, regular bus	-65,1%	-65,1%
cars, 5 - 8 L / 100 km	1.871.954	-	542,84			542,84	-	-20,7%	2.201.555	-	638,42			638,42	ecoinvent 2.2 Transport, PKW	+17,6%	17,6%
PKW, > 8 L / 100 km	-	-	-			-	-	-	-	-	-			-			-
total	1.932.497		544,71			544,71	-32,7%	-20,5%	2.261.324		639,44			639,44		+17,0%	+17,4%
business trips (excl. delivery)																	
foot / bike	-	-	-			-	-	-	-	-	-			-			-
bus	-	-	-			-	-	-	-	-	-			-			-
trains	-	-	2,28			2,28	-	15,2%	19.524	-	1,33			1,33	ecoinvent 2.2, average of transport, high speed train	-	-41,7%
motorcycle	-	-	-			-	-	-	-	-	-			-			-
cars, < 5 L / 100 km	-	-	-			-	-	-	-	-	-			-			-
cars, 5 - 8 L / 100 km	-	-	-			-	-	-	-	-	-			-			-
cars, > 8 L / 100 km	-	-	-			-	-	-	-	-	-			-			-
airplane	-	-	160,19			160,19	-	6,9%	-	-	153,00			153,00	myc internal flight calculator (documentation)	-	-4,5%
total	0,00		162,47			162,47	+7,0%		19.524,00		154,33			154,33			-5,0%
	Unit	Value	GHG [t CO2e]						Unit	Value	GHG [t CO2e]						
consumables																	
paper consumption virgin fibre	[t]								[t]								
paper consumption FSC-mix	[t]								[t]								

paper consumption recycled	[t]	10,57	9,18			9,18	-11,1%	-11,1%	[t]	12,48	10,84			10,84	ecoinvent 2.2: paper, Recycling-, without Deinking,	18,0%	18,0%
toner	[Stück]								[Stück]	215,00	2,14			2,14		-	-
number of replaced / newly bought desktop computer	[Stück]	6	1,62			1,62	-78,6%	-78,6%	[Stück]	90	24,36			24,36	ecoinvent 2.2: desktop computer, without screen	1400,0%	1400,0%
number of replaced / newly bought thin clients	[Stück]						-	-	[Stück]							-	-
number of replaced / newly bought screens	[Stück]	24	8,07			8,07	-54,7%	-54,7%	[Stück]	43	14,46			14,46	ecoinvent 2.2: LCD flat screen, 17 inches	79,2%	79,2%
number of replaced / newly bought laptops	[Stück]	22	4,61			4,61	37,5%	37,5%	[Stück]	80	16,78			16,78	ecoinvent 2.2: laptop computer	263,6%	263,6%
number of replaced / newly bought printers	[Stück]						-	-	[Stück]							-	-
number of replaced / newly bought server	[Stück]						-	-	[Stück]							-	-
work place - printer	[Stück]	9	0,60			0,60	-	-	[Stück]	11	0,73			0,73	ecoinvent 2.2: mean of printer, laser jet, colour, and	22,2%	22,2%
multifunctional - printer	[Stück]	3	3,47			3,47	-	-	[Stück]	2	2,31			2,31	ecoinvent 2.2: mean of printer, laser jet, colour, and	-33,3%	-33,3%
PC-mouse	[Stück]	40	0,20			0,20	-	-	[Stück]	13	0,07			0,07	ecoinvent 2.2: mouse device, optical, with cable, at plant	-67,5%	-67,5%
telefon	[Stück]	28	0,60			0,60	-	-	[Stück]	26	0,56			0,56	ecoinvent 2.2: desktop computer, without screen, at	-7,1%	-7,1%
bluray-writer	[Stück]	1	0,02			0,02	-	-	[Stück]	1	0,02			0,02	ecoinvent 2.2: CD-ROM/DVD ROM drive, desktop	0,0%	0,0%
beamer	[Stück]	1	0,12			0,12	-	-	[Stück]	4	0,48			0,48	ecoinvent 2.2: desktop computer, without screen, at	300,0%	300,0%
Vidy-Server	[Stück]	2	0,77			0,77	-	-	[Stück]						ecoinvent 2.2: desktop computer, without screen, at	-	-
room - camera	[Stück]	1	0,01			0,01	-	-	[Stück]						ecoinvent 2.2: desktop computer, without screen, at	-	-
speaker	[Stück]	1	0,06			0,06	-	-	[Stück]						ecoinvent 2.2: desktop computer, without screen, at	-	-
visualizer	[Stück]	1	0,12			0,12	-	-	[Stück]						ecoinvent 2.2: desktop computer, without screen, at	-	-
prof-display	[Stück]	1	3,36			3,36	-	-	[Stück]						ecoinvent 2.2: LCD-Flachbildschirm, 17-Zoll	-	-
networkswitch	[Stück]	15	0,46			0,46	-	-	[Stück]	14	0,42			0,42	ecoinvent 2.2: router, IP network, at server	-6,7%	-6,7%
barcode scanner	[Stück]	2	0,01			0,01	-	-	[Stück]						ecoinvent 2.2: desktop computer, without screen, at	-	-
headsets	[Stück]	15	0,01			0,01	-	-	[Stück]	27	0,02			0,02	ecoinvent 2.2: Kupferkabel PE, isolation, estimation;	80,0%	80,0%
docking-station	[Stück]	3	0,08			0,08	-	-	[Stück]	5	0,13			0,13	ecoinvent 2.2: desktop computer, without screen, at	66,7%	66,7%
external hard disk	[Stück]	2	0,02			0,02	-	-	[Stück]	4	0,05			0,05	ecoinvent 2.2: HDD, laptop computer, at plant, specific	100,0%	100,0%
scanner	[Stück]	1	0,10			0,10	-	-	[Stück]						ecoinvent 2.2: desktop computer, without screen, at	-	-100,0%
smartphones	[Stück]	13	0,53			0,53	-	-	[Stück]	50	2,04			2,04	iPhone 4 Apple, without use	284,6%	284,6%
keyboard	[Stück]	27	0,70			0,70	-	-	[Stück]	15	0,39			0,39	ecoinvent 2.2: keyboard, standard version, at plant	-44,4%	-44,4%
total			34,75			34,75		-18,5%			75,80			75,80			118,2%
External Prints																	
virgin fibre	[t]	0,31	0,88			0,88	-99,1%	-99,0%	[t]	0,63	1,82			1,82	myc data, based on print sector solution	106,5%	106,5%
recycled paper	[t]	43,76	97,41			97,41	+52,5%	52,5%	[t]	56,10	124,87			124,87	myc data, based on print sector solution	28,2%	28,2%
climate nutral printed	[t]	0,00	0,00			0,00	-	-	[t]						myc data, based on print sector solution	-	-
total		44,06	98,29			98,29	-31,7%	-36,1%		56,73	126,70			126,70		28,7%	28,9%
material production		[t]	[t CO2e]							[t]	[t CO2e]						
Verbrauch Polyethylen-Platten (ca., Tonnen)	[t]	4	22,13			22,13	17,6%	17,6%	[t]	5,2	28,77			28,77	ecoinvent 2.2: Polyethylen-Granulat, LDPE, ab Werk - Kalandrieren, feste Platten	30,0%	30,0%
Planenmaterial Ractaschen (2-seitig, TPU-beschichtetes PE)	[t]	13,7	93,81			93,81	-32,2%	-32,8%	[t]	16,5	112,98			112,98	ecoinvent 2.2: 60% Polyurethan 40% Polyethylenterephthalat	20,4%	20,4%
Planenmaterial PnB (80% PE, 20% PA, einseitig TPU-beschichtet)	[t]	13,5	109,66			109,66	15,4%	15,4%	[t]	20,6	167,34			167,34	Polyurethan 50% Rest: ecoinvent 2.2: Kunststoff	52,6%	52,6%
Plane PVC	[t]	8,6	41,34			41,34			[t]	10,2	49,03			49,03	Polyvinylchlorid, ab Regionallager	18,6%	18,6%
Hardback-Platten (Polypropylen, Tonnen)	[t]	32,6	161,23			161,23	98,8%	98,8%	[t]	44,9	222,06			222,06	ecoinvent 2.2: Kunststoff, Polypropylen-Granulat	37,7%	37,7%
Kleinteile Metall Alu	[t]	1,6	14,88			14,88	-11,1%	-11,1%	[t]	1,7	15,81			15,81	- Kalandrieren, feste Platten	6,2%	6,2%
Kleinteile Metall Messing	[t]	1,8	5,20			5,20	0,0%	0,0%	[t]	2,3	6,64			6,64	ecoinvent 2.2: Aluminium, Produktionsmix, ab Werk	27,8%	27,8%
Kleinteile Metall Stahl	[t]	1,9	6,80			6,80	-73,6%	-73,6%	[t]	1,9	6,80			6,80	ecoinvent 2.2: - Messing, ab Werk	0,0%	0,0%
Kleinteile PE (Tonnen)	[t]	0	0,00			0,00	-100,0%	-100,0%	[t]	0					ecoinvent 2.2: Stahl, niedriglegiert, ab Werk	0,0%	0,0%
															ecoinvent 2.2: Polyethylen-Granulat, LDPE, ab Werk		

Kleinteile PP (Tonnen)	[t]	7,7	42,58			42,58	-28,7%	-28,7%	[t]	3,9	21,57			21,57	ecoinvent 2.2: - Polypropylen-Granulat	-49,4%	-49,4%	
Kleinteile Polyamid	[t]	13,6	156,85			156,85			[t]	17,4	200,67			200,67	ecoinvent 2.2:- Glasfaserverstärkter Kunststoff, Polyamid	27,9%	27,9%	
Kleinteile Polyester	[t]	4,6	35,00			35,00			[t]	5,8	44,13			44,13	ecoinvent 2.2: - Glasfaserverstärkter Kunststoff, Polyesterharz	26,1%	26,1%	
Kleinteile PU	[t]	1,1	7,88			7,88			[t]	0,3	2,15			2,15	ecoinvent 2.2: - Polyurethan, Schaum fest, ab Werk (4.3152)	-72,7%	-72,7%	
Kleinteile EVA	[t]	1	4,79			4,79			[t]	1	4,79			4,79	ecoinvent 2.2:- Vinylacetat, ab Werk (2.0669) - Kasandieren, feste Platten	0,0%	0,0%	
Kleinteile TPU	[t]	1,8	12,68			12,68			[t]	2,4	16,90			16,90	ecoinvent 2.2: - Polyurethan, Schaum fest, ab Werk (4.3152)	33,3%	33,3%	
total	0,00	107,50	714,83			714,83	+22,6%	+37,0%	0,00	134,10	899,65			899,65		+24,7%	+25,9%	
material consumption diverse		[t]	[t CO2e]							[t]	[t CO2e]							
cardboard boxes	[t]	262,90	247,26			247,26	-2,4%	-2,4%	[t]	207,70	195,34			195,34	ecoinvent 2.2: corrugated cardboard carton, mixed fibre, once corrugated, at plant, disposal: recycling	-21,0%	-21,0%	
LLDPE stretch foil	[t]	5,43	30,92			30,92	12,7%	12,7%	[t]	4,42	25,19			25,19	ecoinvent 2.2: approximated with foil, LDPE, at plant + disposal (KVA)	-18,5%	-18,5%	
LDPE foil	[t]	2,57	14,63			14,63	-52,4%	-52,4%	[t]	1,93	11,00			11,00	ecoinvent 2.2: foil, LDPE, at plant + disposal (KVA)	-24,8%	-24,8%	
foil div not LDPE	[t]	2,83	15,37			15,37	305,7%	312,8%	[t]	1,21	6,58			6,58	ecoinvent 2.2: mean, polyester granulate + foil extrusion + KVA and polypropylen granulate + forms + KVA	-57,2%	-57,2%	
lights (pieces)	[Stück]	77	0,07			0,07	0,0%	0,0%	[Stück]						compact fluorescent lamp, Study: OSRAM_LED_LCA_Summary_November_2009	-100,0%	-100,0%	
total		350,72	308,25			308,25	-1,9%	-2,3%		215,26	238,12			238,12		-38,6%	-22,8%	
waste																		
waste [t]	[t]	679,8	33,0			33,0	78,0%	78,0%	[t]	491,8	23,91			23,91	ecoinvent 2.2, disposal, municipal waste, 22.9%	-27,7%	-27,7%	
waste water Vaude Str. 2 [m3]	[m³]	1.919,0	0,7			0,7	-12,5%	-12,5%	[m³]	1.972	0,77			0,77	ecoinvent 2.2, treatment, sewage, to wastewater	2,8%	2,8%	
waste water Siggenweilerstr. 25 [m3]	[m³]	365,0	0,1			0,1	#DIV/0!	#DIV/0!	[m³]	440	0,17			0,17	ecoinvent 2.2, treatment, sewage, to wastewater treatment, class 3	20,5%	20,5%	
total		2.963,8	33,9	0,0	0,0	33,9	+15,1%	+74,7%		24,8	0,0	0,0		24,8			-26,8%	
	Wert		TGH						Wert		TGH							
			[t CO2e]								[t CO2e]							
hotel accomodation																		
hotel accomodation 2*-hotels	218	-	2,18			2,18	-	-	544	-	5,44			5,44	myc data, estimation based on hotel sector solution	149,5%	149,5%	
hotel accomodation 3*-hotels	670	-	13,40			13,40	-27,9%	-27,9%	580	-	11,60			11,60	myc data, estimation based on hotel sector solution	-13,4%	-13,4%	
hotel accomodation 4*-Hotels	179	-	8,95			8,95	-55,0%	-55,0%	181	-	9,05			9,05	myc data, estimation based on hotel sector solution	1,1%	1,1%	
hotel accomodation 5*-Hotels	0	-					-	-	40	-	1,20			1,20		-	-	
total	1.067		24,53			24,53	-19,6%	-36,3%	1.345		27,29			27,29		+26,1%	+11,3%	
	weight per year	total GHG	GHG						weight per year	total GHG	GHG							
	[t]	[t CO2e]	[t CO2e]						[t]	[t CO2e]	[t CO2e]							
delivery outbound																		
lorry 16 - 32t	4.022	64,00	1,71			64,00	-2,9%	-71,2%	2.484,7	299,49	15,36			299,5	ecoinvent 2.2, transport, lorry 16-32t, EURO4	-38,2%	368,0%	
freight trains, europe	21	0,80	0,02			0,80	#DIV/0!	#DIV/0!						0,0	ecoinvent 2.2, transport, freight, rail RER	-100,0%	-100,0%	
transoceanic freight ship	21	2,86	0,08			2,86	#DIV/0!	#DIV/0!	115,9	13,71	0,70			13,7	ecoinvent 2.2, transport, transoceanic freight ship	444,1%	379,8%	

Geschäftsver.
 Pendelver.
 Material Fert.
 Material diverse Verbra.
 Erri
 Druckse
 Verbrauchsmat.
 anteilige Transporte I
 r
 W.

THG pro Mitarbeiter (t CO2e)



Entwicklung THG-Emissionen Gesamt (t CO2e)

